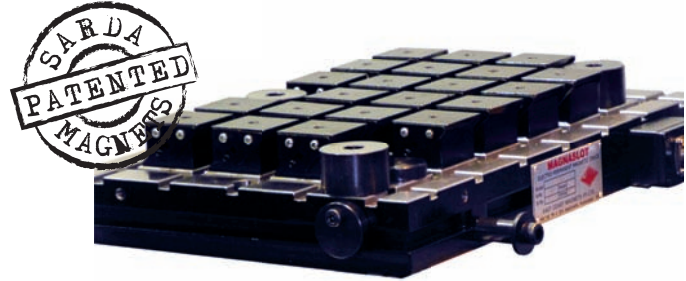


MAGNASLOT 75

75mm square pole rectangular magnetic chuck

Features

- Patented full steel Top surface.
- High & uniform clamping power throughout the bed.
- Variable magnetic power possible.
- Perfect safety in case of power failure.
- Modular, Rigid and Robust construction.
- Unobstructed movement of tools during machining as all five faces of the job can be machined in the same setting.
- Drastically reduces the setup time and machining of the work pieces.
- Total magnetic surface used for clamping giving better machining accuracy as reducing chattering.
- 100% Leak Proof.

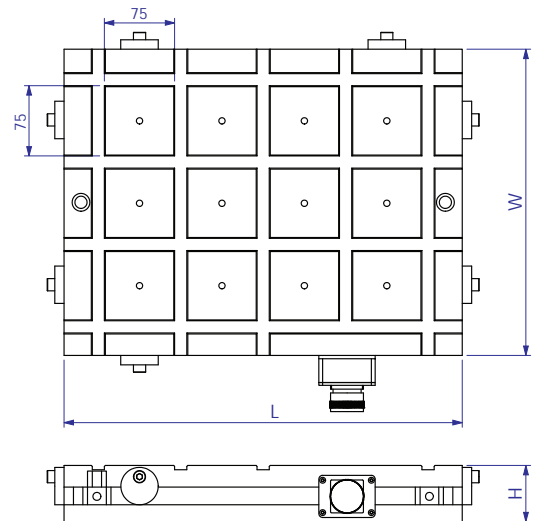


Application

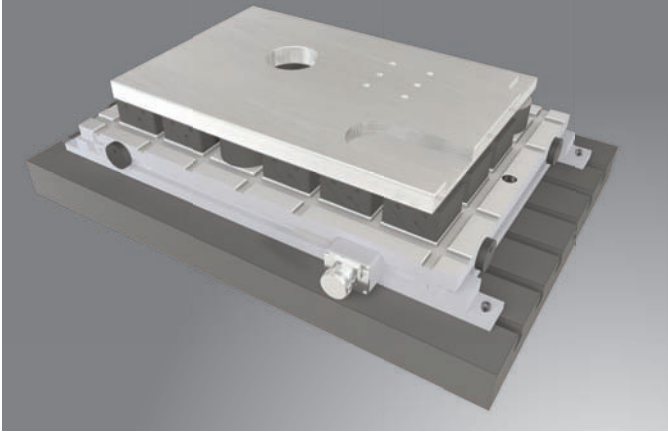
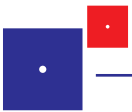
- Most suitable for milling operations on thick and rough components.
- A minimum of 4 alternate poles contact is necessary for optimum clamping.
- Minimum thickness of job - 15 mm.
- Easily integrated with Pallet changing and FMS Systems.
- AUTOMATIC SHIMMING: Mobile pole extensions allow clamping and uniformly support work pieces even with uneven surfaces, achieving high accuracies of planarity.
- Clamping force ≥ 790 kg/pole.

ART No.	W	L	Poles	H	Controller
13131.01	239	425	8	60	93101.01
13131.02		601	12		
13131.03		815	16		
13131.04		1029	20		
13131.05	327	425	16		
13131.06		601	18		
13131.07		815	24		
13131.08		1029	30		
13131.09	415	425	16		
13131.10		601	24		
13131.11		815	32		
13131.12		941	36		
13131.13		1029	40		
13131.14	503	425	20		
13131.15		601	30		
13131.16		815	40		
13131.17		941	45		
13131.18	591	1029	50		
13131.19		601	36		93101.01
13131.20		815	48		93101.02
13131.21		941	54		93102.03
13131.22		1029	60		

- Due to continuous upgradation in design there could be change in specification.
- Others sizes on request.
- All dimensions are in mm.



- The Magnet can be designed for 220/380/400/480 VAC, 50/60 Hz.
- Custom designed solutions also available.

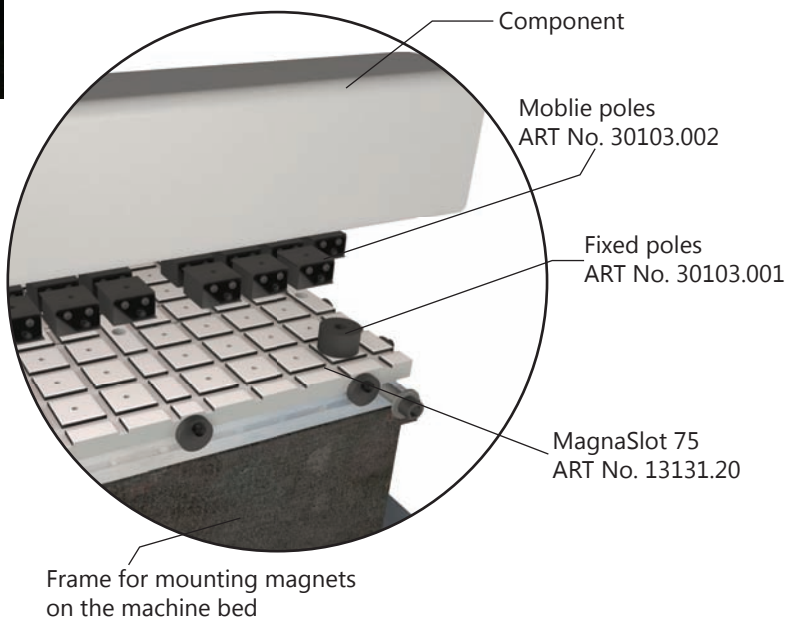
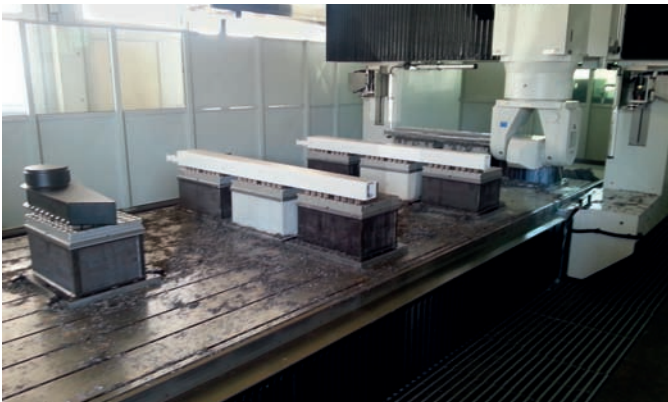
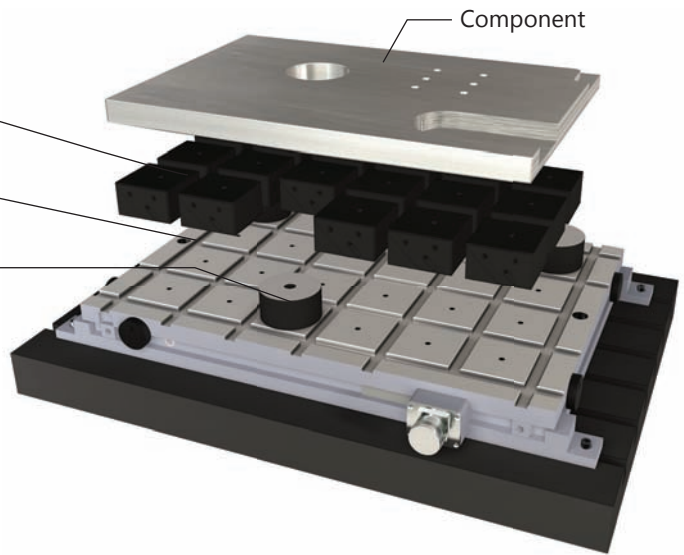


Component	Wall Plate
Input condition	Un-machined Plate
Material	Mild steel
Operation	Machining of both side, drilling and slotting
Customer Expectation	All 5 side machining
Trail details	The job was kept on mobile poles and fixed poles, then machined on all 5 faces with bores and edge milling.
Solution details	MagnaSlot 75 along with fixed and mobile poles were used.

Mobile poles
ART No. 30103.002

MagnaSlot 75
ART No. 13131.10

Fixed poles
ART No. 30103.001



Component	Frame tube
Input condition	Fabricated
Material	Steel
Operation	Drilling and edge milling
Customer expectation	Cycle time
Trail details	The jobs were clamped in sets of 3 MagnaSlot 75 chucks with each chuck having the possibility of being switched on and off separately. Holes upto dia 50 mm were done.
Solution details	MagnaSlot 75 mm square pole chuck was used along with mobile & fixed poles